



***EnerSys***®

*Power/Full Solutions*

# Worlds Largest Industrial Battery Company

- Global leader of Stored Energy solutions with 100 yrs experience
- Primary markets –
- Reserve Power, Motive Power, Aerospace & Defense, Specialty
- 25% global market share
- NYSE-listed (ENS)
- Solid liquidity to finance growth
- Over 25% revenue from unique lead acid premium products
- Over 9,500 employees servicing more than 10,000 clients in 100 countries
- Leading presence with 28 global manufacturing facilities
- Industry innovator with focus on emerging technologies

# Perfect Plus™ Wet Cell Battery

- Wet cell tubular positive plate
- Complete range DIN (PzS) & BS (PzB)
- All applications
- 1500 cycle design life (80% DOD)
- Bolt-on cells - No flame, easier repair/assembly
- Secure seal, insulated connector links
- Flip top manual filler cap with level indicating base
- High Rate / Opportunity charge capable
- Value add options:
  - *Aquamatic™ Single Point Watering*
  - *Wi-iQ™ Battery Electronics*



# Global Market Leader

Motive  
Power



Reserve  
Power





# Product Applications – Motive Power



**Warehousing**



**Battery Rooms**



**Railway**



**Airport Ground Support**

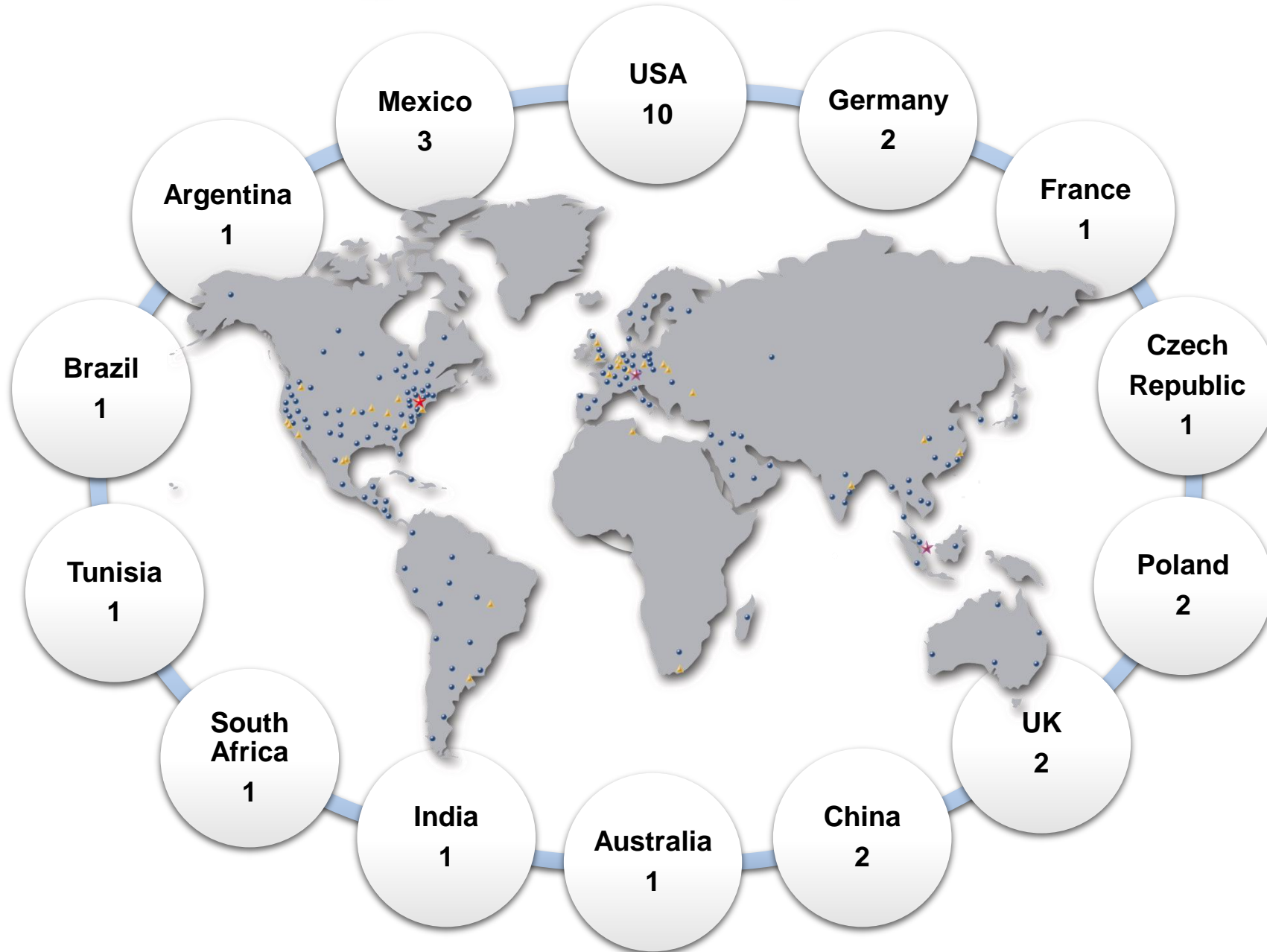


**Floor Care & Leisure**



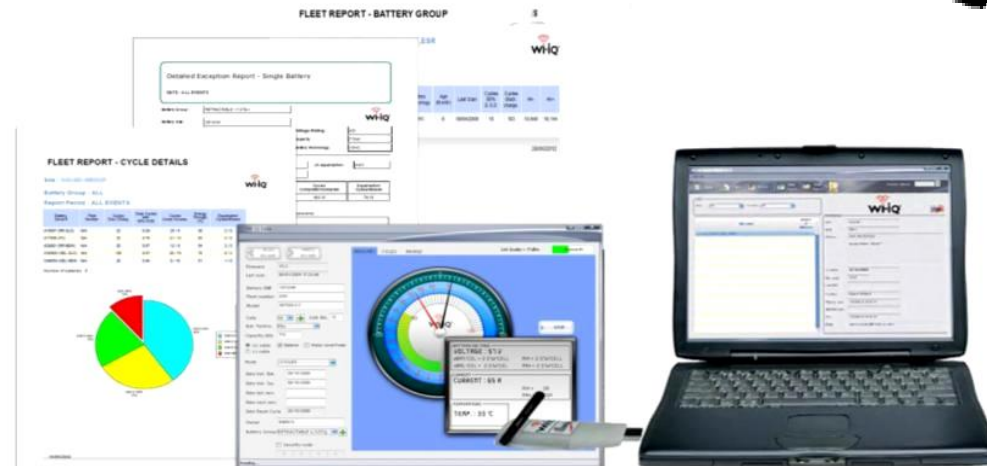
**Mining**

# 28 Manufacturing Facilities Globally



# Wi-iQ<sup>®</sup> Battery Monitoring Device

- Suitable for all batteries
- Records Volt, Cycle, Balance, Water Level, Temp, Ahr & Current
- Wireless download via USB key
- Communicates to Life IQ charger
- Wi-iQ Reporting Suite software
- 8 x Report types generated
- Economical fleet management



TRICOLOUR LED	Green blink Blue rapid blink Red blinking	– Hardware OK – Wireless identify – Temperature warn
BLUE LED	Rapid blink Slow blink Fixed	– Wireless identification – Voltage balance warn – Low electrolyte level



# Single Point Water Systems



Optional cap fitted to cells. Linked tubing allows the filling of all cells from one single point.

- Reduced time and cost
- Reduced OH&S exposure to acid & lead from within cells.
- Accurate fill every time
- Easy fill for inaccessible batteries
- Cleaner batteries

